

# P1080



## Macro to Infinity

Autofocus Dental Camera with Mouse



ISO-13485  
Facility

# Polaroid P1080



## Macro to Infinity

Camera is able to focus from macro mode (close) to infinity that includes a full arch and face shot with just one press of the capture button!

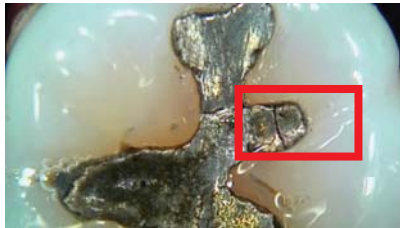


## FHD image support

The device shows FHD (1080p) in live image supported by a 5M sensor.



Full HD



Original image



HD

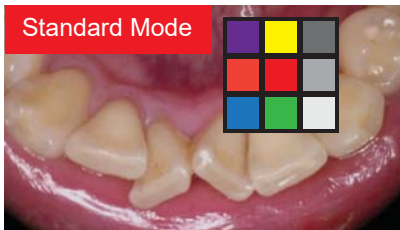


## Color impressions

Adjust the color impression on camera to fit different monitors or screen.



Original Mode (Default)

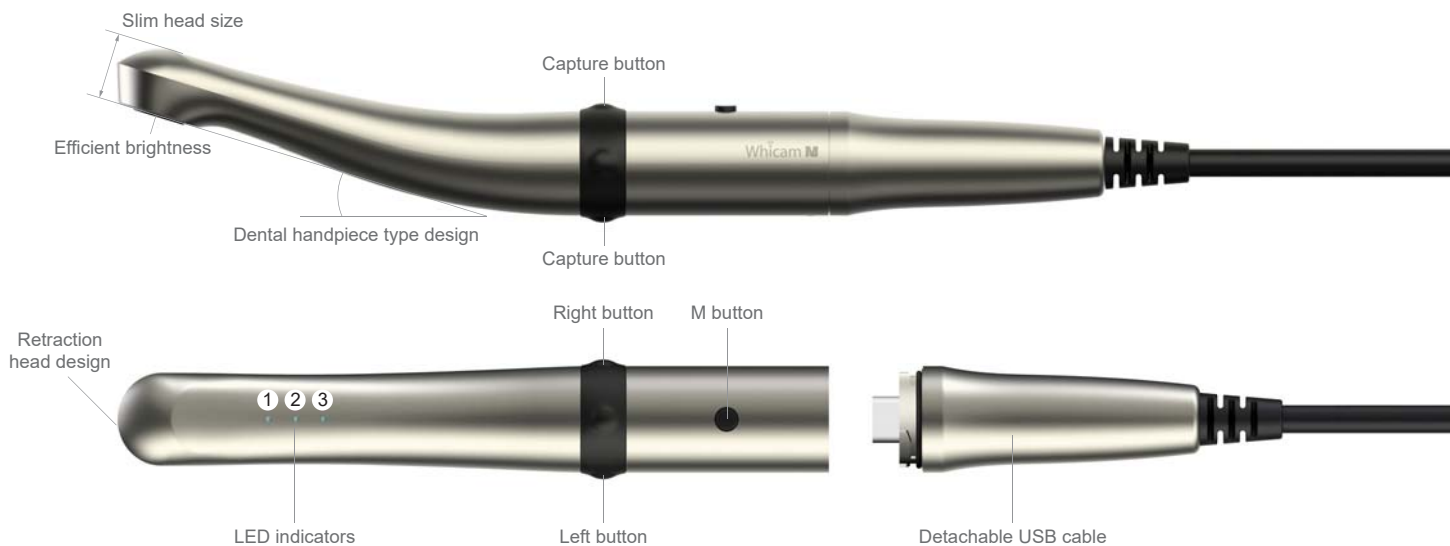


Standard Mode



Warm Mode

Same color chart image with xrite



## Features of P1080

### Image quality



#### Macro to infinity

Camera is able to focus from macro mode (close) to infinity that includes a full arch and face shot.



#### Auto-focus Liquid lens Optics

Camera is able to focus in any position not only inside of oral cavity but also full arch and face shot.



#### FHD image support

The device shows FHD (1920 X 1080p) in live image supported by a 5MP sensor.



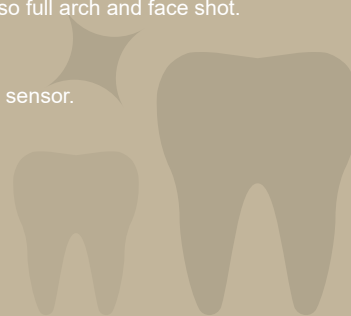
#### Color impressions

Adjust the color impression on camera to fit different monitors or screen.



#### Black&White function

Capture and save X-ray film image to PC



#### Dental handpiece design

Familiar and comfortable design for dentists.



#### Metal body case

Metal body increases product durability.



#### Slim head size

Slim head design makes it easier to approach the oral cavity with camera.



#### Retraction head design

Retract patient's tongue and cheek to get better image.



#### Efficient brightness

12 Adjustable LEDs makes for efficient brightness.



#### Dual capture buttons

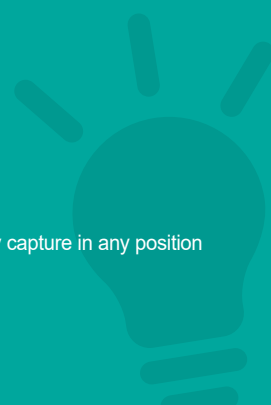
Capture buttons are placed on the top and bottom side of camera to make for an easy capture in any position



#### LED indicators

LED indicators show the device status and mode.

### Ergonomic design



#### Mouse function

Built-in mouse function for user convenience.



#### Zoom function\*

Ability to enlarge the image with zoom feature to support user convenience.



#### LED brightness adjust

Ability to adjust the LED brightness.



#### Support twain driver

Twain driver allows for use in cloud based imaging software.



#### Software compatibility

Plug-N-Play with almost any dental imaging software on the market.



#### Detachable USB cable

Detachable USB cable makes it easy to move the camera to other dental chairs.

### Convenience



\* Requires additional software and may not be functional with some softwares.

# Polaroid



## Zoom function \*

Ability to enlarge the image with zoom feature to support user convenience.



\* Need to install additional Zoom software which may not be compatible with some older imaging programs or versions.



## Software compatibility

Plug-N-Play UVC drivers and optional twain driver make it able to be used with almost any dental imaging software in the market.



## 1 Specification

Model	P1080	1920 X 1080 FHD
Camera	Power source	5V (USB power)
	Size	Approx. 128 x 21.5 x 32 mm
	Weight	Approx. 61g (2.2oz)
	Sensor type	5MP CMOS sensor
	Lighting	White LED x 12 pcs
	Focusing	Liquid Lens Auto-focus
	Focus range	Macro to infinity
USB cable	cable length	Approx. 3 M (9.8ft)

## 2 Recommended PC system

PC system:	3.3GHz CPU, 4GB RAM
OS:	Windows 8 on up and Mac
USB port:	USB 2.0 / 3.0



# Polaroid HealthCare

844-789-5050

www.polaroidhealth.com

17609 Ventura Blvd. #115 | Encino | CA | 91316 | E-mail.